

SCIENSCOPE

Sciencescope International

Microscopes and Videoscopes

www.sciencescope.com

RENISHAW

apply innovation™

Renishaw Inc.

CMM Probes and Stylus

www.renishaw.com

Prolink

Prolink Software

Data Gathering and Analysis Software

www.prolinksoftware.com



We offer training, service and calibration on comparators and video systems. Please contact us for a competitive quotation.

Join us for our exclusive open house/technology seminar held every fall in Meadville and Pittsburgh.

We hope to see you at the Expo Erie Show (www.expoerie.com) in beautiful Erie, Pennsylvania.

If you are not on our mailing list, please contact us to be added and receive a personal invite to all of our events!

proud member of:

Pittsburgh  Technology Council

1825 - 7th Avenue
Beaver Falls, PA 15010



Inspection
it
Technologies

Specializing in Precision
Measuring Systems

- SALES
- SUPPORT
- SERVICE
- SUCCESS

1825 - 7th Avenue
Beaver Falls, PA 15010

tel: 724-846-1618 • fax: 724-846-3275

e-mail: contact@itgage.com

www.itgage.com



www.helmel.com

HELMEL Engineering Products Inc.

Coordinate Measuring Machines

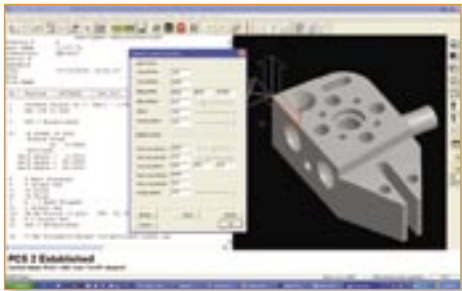
Established in 1973, HELMEL is the oldest continuous CMM company in the USA.

Standard sizes from: 6 x 9 x 5" to 60 x 120 x 40"



- Featuring a unique mechanical bearing design
- Suitable for harsh environments
- No air bearings or air connections

HELMEL GEOMET Software is developed right at the company and is available in various levels to grow as your needs grow.



GEOMET is available as a retrofit to any CMM. Imagine adding this power to your existing CMM, enabling "state of the art" performance at a fraction of the cost of a new machine.



www.ogpnet.com

Optical Gaging Products Inc.

Video / Multi-Sensor Measuring Systems and Contour Projectors

Since 1945, OGP is the world leader in non-contact measuring systems.



Video systems are available in over 2,000 configurations. Choose from Lasers, Touch Probes, Rotaries & Video with travels from 8 x 8" to 36 x 60" and Z-axis from 6 to 16"



The OGP comparators are available in 14, 20 & 30" models. Full-featured and durable for your shop floor use.

We have several OGP models available for demonstration and evaluation in your facility.



www.romer.com

ROMER Inc.

Portable Measuring Arm

ROMER CimCore invented the portable CMM and remains the leader and foremost innovator in portable metrology.



Suited for shop floor environments, the ROMER portable arm is available as the INFINITE high accuracy arm or the STINGER Ili value arm.

Lengths of 4, 6, 8, 9, 10, 12 and 15'

Ideal for reverse engineering and large parts. Given the right application, the ROMER arm is unbelievable.

Let us demonstrate a ROMER arm on your shop floor.